

Lund Barnacle

April 2009

All proceeds to the Lund Community Society.

\$ 2.00 (free to members)

IT FLOATS !!



Many a strange thing has been seen in the Lund Harbour and here's one to add to the list. Story and more photos on page 8.

The Voice of Lund and the Region

www.lundcs.org

INSIDE

Sports Day in Lund

A Houseboat Floats

April Crossword &
January's Crossword Answers

Coast Guard

Sudoku

Goodwill Report

Mile 0 Project

Financial Crisis Explained

Amazingly Simple Home Remedies

Births & Passings

Food Art

Water Taxi Wind Damage

Shellfish Festival 2009

Help Wanted

Advertising Rates

Business Card Size: \$ 7.50
Double Business Card Size: \$ 15.00
Quarter Page: \$ 20.00
Half Page: \$ 40.00
Full Page: \$ 80.00

Colour ads multiply by 1.5

All proceeds support the Lund Community Society

Next edition is April 2009.
Deadline for submissions is two weeks prior.

The Lund Barnacle

Publisher:
The Lund Community Society

Editor:
Ann Snow

Writers:
Sandy Dunlop
Harry Robertson
Ann Snow
Lori Burge

Photography:
Harry Robertson
Ann Snow

Layout and Design:
Ann Snow

Crossword:
Court Cressy

Sudoku:
Donna Kay Hobbs

Proof Reader:
Ron Cochrane

The Lund Barnacle is published seasonally. All proceeds go to the Lund Community Society, a non-profit organization providing community services to Lund and Region. Submissions are welcome in the form of articles, news items, letters to the editor, fillers, graphics and photographs. We reserve the right to edit for clarity and length. Submit to the Barnacle in the Lund Community building or contact Ann Snow at 483-9220 or email barnacle@lundcs.org.

Editorial Policy

The Barnacle is a forum for ideas in the Lund community. Editorial policy is to print what people submit in their own voices as much as possible, respecting the paper's purpose of providing a forum for the community on things that matter to its members.

The Lund Community Society is comprised of community volunteers. No member of the Board of Directors receives a salary or wages.

EDITORIAL

By Ann Snow

Well Spring has finally arrived and it's not all doom and gloom. Housing starts and car sales are reportedly higher than expected so the recession is slowly coming to an end. But I'm happy just knowing the daffodils are up and the humming birds are back, flitting from feeder to feeder as they await the honeysuckle blooms.

We survived another stormy winter season and it's time to plant your garden unless, unlike me, you've already started. I never find the time but my mother is generous with her harvests so I'm lucky that way. She has such a green thumb. But I have other talents - somewhere!

So until the summer edition of The Barnacle, may your thumbs be green and your vegetables crisp.

Take the bus

Only \$2.00 takes you right to the Town Centre Mall where you can do all your shopping, have lunch, meet friends, or walk to your appointments. Then for \$2.00 you can catch the bus back. Cheaper than driving!

Departs Lund Hotel 10:55am

Departs Town Centre Mall 4:05pm

Use It or Lose It !!

*Note: 15% of drivers
get 76% of all traffic tickets.*



Rare Earth Pottery

Original, hand made works in clay

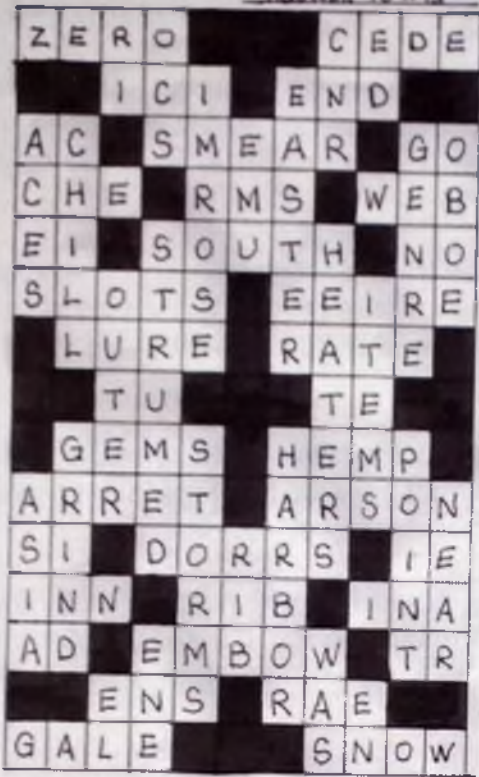
Ocarinas, shakers, masks, figurative jars, vases and more

Studio Sales by Appointment



9644 Quarry Place, Lund
604-483-4806
rareearth@armourtech.com

ANSWER TO #13



Amazingly Simple Home Remedies!!

1. Avoid cutting yourself when slicing vegetables by getting someone else to hold the vegetables while you chop.
2. Avoid arguments with the females about lifting the toilet seat by using the sink.
3. For high blood pressure sufferers ~ simply cut yourself and bleed for a few minutes, thus reducing the pressure on your veins. remember to use a timer.
4. A mouse trap placed on top of your alarm clock will prevent you from rolling over and going back to sleep after you hit the snooze button.
5. If you have a bad cough, drink a quart of prune juice, you'll be afraid to cough.
6. You only need two tools in life - wd-40 and duct tape. if it doesn't move and should, use the wd-40. if it shouldn't move and does, use the duct tape.
7. If you can't fix it with a hammer, you've got an electrical problem.

DAILY THOUGHT: Some people are like slinkies - not really good for anything but they bring a smile to your face when pushed down the stairs.



www.powellriverhomes.com
4471 Joyce Avenue
Powell River, BC V8A 3A8

360° Virtual Tours

Janet Alred, Realtor®
Licensed Property Manager
Cell 604.414.5994
www.coastallivingbc.com
jalred@shaw.ca
Happy to help every step of the way

Historic Lund Hotel

open
year
round



Your resort and marina at
Desolation Sound.

Experience the sunsets, scenic beauty and
pristine waters surrounding this fully restored
oceanfront property.

604-414-0474 www.lundhotel.com

Larry's WoodShop

- Carved Signs
- House Numbers
- Tel: 604 483 9619
- email: twolarry@hotmail.com



SPORTS DAY IN LUND

By Sandy Dunlop



On Saturday, May 2, from 10 a.m. to 2-ish, the Lund Community Society will host its fifth annual Sports Day and community potluck to feed all the hungry participants and spectators. Everyone is welcome. Everything is free, although donations to the Society are always appreciated.

We'll begin by distributing players among the traditional teams of Chinooks, Eagles, and Cougars. Since teams are made up of kids of all ages, it's most fun if we get a good mix of younger and older children. Adults are even welcome to join, and are often pulled in to balance out teams.

Then we'll start the races. Events will be relay or a cooperatively competitive style, including the shoe-pile search, the dress-up relay, and the faulty tower construction, just to name a few, and we're planning some new activities for this year. Ribbons will be generously awarded.

Get ready to exercise those smile muscles! By the end of the day, your face may hurt just watching the extreme cuteness of the little kids and the hilarious antics of the older ones. It's a real hoot and a wonderful community gathering. This is an outdoor event, so it is somewhat weather dependant. Let's plan on sunshine!



COAST GUARD

By Ann Snow

The Coast Guard was in the Lund Harbour in March to realign the buoy which marks the rock hazard in the harbour. This needs to be done regularly because the anchor shifts with the tides and storms. Otherwise the buoy would not accurately depict where the hazard lies.



Jack's Boat Yard

Jack Elsworth

Gerry Elsworth

- Travel Lift to 30 tons
- Located in Finn Bay, Lund, B.C.
- Boat Storage with available power and water
- Work on your own boat at your leisure
- Boat maintenance supply store

<http://www.jacksboatyard.com>

Phone (604)483-3566 Fax (604)414-0402 Email: jack@twincomm.ca
PO Box 138, 9907 Finn Bay Road, Lund, B.C. V0N 2G0

Birth Announcements

A baby boy, named Kellan, was born to Misty Gleave and Mike Brown on March 13th. Two belated birth announcements: a baby girl, named McKenzie Raven, was born to Hayley Creasey and Mike Luaifoa on November 6th; and a baby boy named Hayden was born December 8th to Michelle Scott and Jamie Morrison. Welcome to Lund, little ones, and congratulations moms and dads.

Sympathy and Condolences

On February 21st, Kari-Ann Farrell suddenly passed away at the tender age of 40 years old. Our sincere condolences to longtime partner, Tom Heins, and daughters Liliana and Georgina.

Lund lost another of its longtime residents on March 10th with the passing of Karl Larson. Our deepest condolences to the Larson family and to his close friends.



Lund Community Society

Goodwill Committee Spring 2009 Report

In the last three months, the Goodwill Committee sent cards to five community members, expressing our congratulations for new baby arrivals, get well wishes and thoughts, and sympathy and condolences to family members of those who have departed.

Starting soon, we are going to be welcoming new residents to Lund with a letter from the Goodwill Committee and a free issue of the Barnacle, available at the Lund Post Office.

The Goodwill Committee of the Lund Community Society exists to nurture a sense of community in Lund by acknowledging and sharing important events in people's lives and letting them know that we care. It's only possible to contact those people we hear about, so please call Sandy at (604) 483-2395 with any news you think should be acknowledged.

Did you know . . . ?

*Poison oak is not an oak and poison ivy is not an ivy.
Both are members of the cashew family.*

Lund Community Society

Library

Open
Tuesdays
7pm - 8pm

At the Lund Community Hall
9654 Larson Road

No library card required

Word-o-Ku

Game play is the same as Sudoku but using 9 different letters instead of number 1 to 9. The complete Word-o-Ku puzzle contains all of the letters in every row, column, and 3x3 box.

The word for the puzzle below is **LUND WATER**.

1. Fill the grid so that the all of the letters appear in each row.
2. Fill the grid so that the all of the letters appear in each column.
3. Fill the grid so that the all of the letters appear in each 3x3 box.

N			D					
A	E		R				D	
D						T	R	A
			U	L		W	N	
	R	E		N	A			
W	D	N						T
	U				W		A	E
					R			U

Mile 0 Marker Project

By Ann Snow

Lund is proclaiming its status as Mile 0 of the Pacific Coastal Highway, one of the longest highways in the world. At the other end of the road is a similar fishing village called Quellon, in the region of Porto Monte in Chile.

A Mile 0 marker will be built in the bus turn-around circle across from the Lund Hotel. It will stand approximately 10ft high with a 3ft square base. It will be faced with stonework and durable "Mile 0" signs making it both permanent and maintenance-free. Also it will contain a 2009 time capsule.



Funds to cover the cost of this project are being raised by the Lund Community Society. For a small fee, personalized tiles will be embedded around the base of the marker. All contributions are considered donations and a tax receipt will be issued.

To this end, parking will no longer be available in this area. We appreciate everyone's cooperation in this regard.

SeaDream Oceanside B & B
 3245 Atrevida Road - north of Powell River, BC
 Rossella & Brian - 604-483-3241 fax 604-483-3242

www.theseadream.bc.ca
 Toll free:
 1-877-PWR-CDRM
 (1-877-797-2376)

SEVILLA ISLAND RESORT



Luxury Accommodations
 Desolation Sound Boat &
 Snorkeling Tours
 604-414-6880

Karl V Larson

December 2, 1922 – March 10, 2009

To all who have noticed the flag flying at half-mast over the far point on Murray Road, please know it marks the passing of one of Lund's most senior citizens.



Our fisher friend Karl passed away on March 10th just as the sun was sinking in the west. For a troller an approaching sunset signals the time to head for a safe harbour. Last Tuesday it signaled the end of a life well lived. Although we are saddened by our loss we are also uplifted by the fact that Karl left us just as he would have wanted.

Without pain, without fuss and in the company of good friends. As Karl requested he will be laid quietly to rest near his beloved mother.

Karl was born and bred on the BC coast and his mind was a treasure box full of history and adventure. It was like stepping back in time to sit by his fire and thrill to tales as fine and exciting as those told in best-selling novels.

Karl did not want a formal service but, in his honour, please take a minute to show someone a simple act of kindness. In his last years, when the pressures of a hard career had lessened, Karl delighted in thinking of little ways to help and treat others. It was lovely to watch and a lesson well learned. Kindness inspires kindness.

Thank you to the doctors and nurses whose care and patience provided much needed support during a difficult journey. And a very special thank-you to Ann, Ron, Deirdre, Neil, Kimberly, Harry and Cat. If everyone was blessed with friends like you the world would shine far more brightly.

BUFFALO BUILDERS

GORDIE MALLERY
BOX 70, LUND, BC, V0N 2G0
604-483-7955

Octopus eyes resemble human eyes - the U.S. Air Force once taught an octopus to "read" by distinguishing letterlike shapes.

SunLund By-The-Sea

RV sites ~ Tent sites ~ Cabins

604-483-9220 Clean showers,
www.sunlund.ca washrooms,
Located in Lund by the boardwalk laundromat

Campsites open April 25
Cabins available year round by reservation

Random Fact

Porcupines are good swimmers because their quills are full of air.

Be our Guest at The Magical Dome.

A unique part of Lund's history, minutes from the Harbour. This wilderness forest sanctuary will accommodate your romantic weekend, (or wedding guests) group retreat, hiking, kayaking, rock-climbing or diving excursions, or family holiday.

Visit www.magicaldome.com or call Phil or Roisin
604-483-9160.

pollensweaters.com
1 800 667-6603
(604) 483-4401

Pollen Sweaters Inc. Carla Brosseau
Lund Harbour

Euchre . . . every Tuesday at 7:00pm at the Lund Pub.

It really does not matter how good a player you are, it is always a fun night out.
Come join in if you want to learn how to play euchre.

IT FLOATS (from front cover)

By Harry Robertson

One sunny afternoon in early March, with a brisk westerly blowing, a strange site appeared coming down Thulin Passage. It was a weathered trawler using a makeshift bridle to tow a rather large dilapidated floathouse.

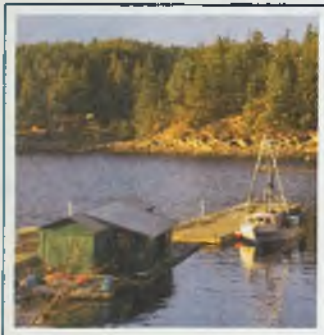


Seeking shelter they altered course for Lund. There were only two crew: a skipper aboard the trawler and a deckhand on the tow. After a long series of commands and replies yelled back and forth (goodness, I had no idea how many four letter nautical terms there were nor how often they had to be repeated at the top of one's lungs) the rig was brought alongside the northerly breakwater.

This did not afford enough protection so they decided to enter the harbour. Surely the floathouse was too wide but to my amasement the ungainly assemblage was brought in without a touch. A bit more delicate manouvering with the help from a puff of offshore



breeze nestled the floathouse gently up against the inside of the southerly breakwater where she lay for three days until calm seas permitted the tow to continue on to her destination in Comox.



I am told in years gone past large structures frequently were towed in to our harbour but this was a first for me. I marvelled at the skill of the trawler skipper. It was a real feat of seamanship bringing that large awkward structure in without so much as a scratch.

Chris Matz Construction

*All aspects of quality construction
Over 20 years experience*

10038 Finn Bay Rd
Lund, BC V0N 2G0 483-9605

HELP WANTED

Community Ambassador to work at the Lund Information Booth located on the boardwalk at the waterwheel overlooking Lund Harbour.

Successful applicant must be a student between 15 and 30 years old, registered full-time in the previous academic year and intending to return full-time in the next academic year.

\$10.00 per hour, 5 hours per day, 5 days per week, plus commissions on business referrals.

Send resume to: Lani
Lund Community Society
Box 202
Lund BC V0N 2G0

(this position is subject to approval of government funding)

Play group has resumed

Fridays 10am - 12noon
Lund Community Centre

For information, contact Jasmin
604-483-9713



LUND COMMUNITY SOCIETY

"MILE 0" COMMITTEE

Reg. #S-47834

MILE 0 MARKER PROJECT

The community of Lund is building a "Mile 0" marker at the location of the beginning/end of Highway 101.

Mile 0 launches the initial leg of the Pacific Coastal Highway, one of the longest highways in the world, which ends in southern Chile, approximately 15,202km from Lund.

Through the Lund Community Society, permits have been acquired and funds are being raised for this historic marker which will be located in the centre of the bus turnaround circle between Dave's Parking and the Lund Hotel.

Tile Prices

5½" x 5½" for \$125

7½" x 5½" for \$145

Quantities are limited.

The marker is designed to be 10ft tall, permanent and require no maintenance. It will be constructed of cement and surfaced with split rock. Bollards will delineate the marker for the safety of visitors who will come to Lund to take photos of this unique structure.

This is your opportunity to become a part of history. To raise funds for the "Mile 0" marker, the Lund Community Society is selling handpainted ceramic tiles to be embedded into the step around the base of the marker.

Forms are available at SunLund By-The-Sea, the Lund Hotel front desk, Nancy's Bakery, and the Lund Harbour office, or visit www.lundbc.ca, "Events".



LUND COMMUNITY SOCIETY

"MILE 0" COMMITTEE

Reg. #S-47834

MILE 0 MARKER Tile Application Form

Date: _____, 2009

My name _____

My mailing address _____

City, province, postal code _____

A contact phone number _____

I would like a tile of the following size (check one):
_____ 5½" x 5½" for \$125
_____ 7½" x 5½" for \$145

The lettering on the tile is limited to the spaces and lines as set up below:

Line 1											
Line 2											
Line 3											

5½" tile to here ↑

7½" tile to here ↑

I would like the lettering to be (check one): _____ **dark blue** _____ **dark green**

Enclosed is my donation cheque for \$ _____ made payable to the **Lund Community Society - Mile 0 Committee**, mailed to **Box 202, Lund, BC, V0N 2G0**. Please send me a tax receipt.

I understand that each tile will be handpainted and laid into the step around the base of the marker. The marker's estimated completion date is June 30, 2009.

X _____
Signature

NOTICE

SOLID WASTE TIPPING FEE INCREASE

Effective **April 1, 2009**, the tipping fee for mixed waste delivered to Augusta will be:

\$200/tonne or
\$5 minimu per delivery

New fees are required to cover increases to our waste export costs.

Terra•Centric



www.terracentricadventures.com

The Financial Crisis Explained In Simple Terms

Heidi is the proprietor of a bar. In order to increase sales, she decides to allow her loyal customers - most of whom are unemployed alcoholics - to drink now but pay later. She keeps track of the drinks consumed on a ledger (thereby granting the customers loans).

Word gets around and as a result increasing numbers of customers flood into Heidi's bar.

Taking advantage of her customers' freedom from immediate payment constraints, Heidi increases her prices for wine and beer, the most-consumed beverages. Her sales volume increases massively.

A young and dynamic customer service consultant at the local bank recognizes these customer debts as valuable future assets and increases Heidi's borrowing limit.

He sees no reason for undue concern since he has the debts of the alcoholics as collateral.

At the bank's corporate headquarters, expert bankers transform these customer assets into DRINKBONDS, ALKBONDS and PUKEBONDS. These securities are then traded on markets worldwide. No one really understands what these abbreviations mean and how the securities are guaranteed. Nevertheless, as their prices continuously climb, the securities become top-selling items.

One day, although the prices are still climbing, a risk manager (subsequently of course fired, due his negativity) of the bank decides that slowly the time has come to demand payment of the debts incurred by the drinkers at Heidi's bar.

However they cannot pay back the debts. Heidi cannot fulfill her loan obligations and claims bankruptcy.

DRINKBOND and ALKBOND drop in price by 95 %. PUKEBOND performs better, stabilizing in price after dropping by 80 %.

The suppliers of Heidi's bar, having granted her generous payment due dates and having invested in the securities are faced with a new situation. Her wine supplier claims bankruptcy, her beer supplier is taken over by a competitor.

The bank is saved by the Government following dramatic round-the-clock consultations by leaders from the governing political parties.

The funds required for this purpose are obtained by a tax levied on the non-drinkers.

Finally . . . an explanation I understand.

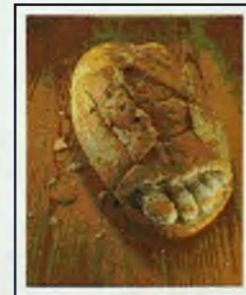
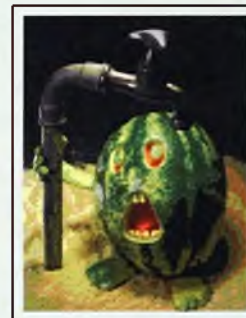
Food Art



The Big Wind

By Ann Snow

Remember the big wind that followed shortly after the April Fool's Day snowfall? Here's what it did to the Lund Water Taxi's float and ramp.



THE BOARDWALK RESTAURANT
LUND B.C.
GREAT FOOD - GREAT COMPANY

OPEN SOON
under new management

*New menu
Items*

Call 483-2201
for reservations

www.theboardwalkrestaurant.ca





Lund Shellfish Festival

May 22-24, 2009

The Shellfish Capital of the Sunshine Coast

May 22 - Community Kick off
Evening Social & Silent Auction
Lund Restaurant Specials



May 23 - Market Day
Children's Area, Live Music
Local Art & Craft Booths
Tla'Amin First Nation Events
Shellfish Cooking Demos
Local Shellfish Food Venders
Lund Harbour Walking Tours
Live Shellfish Sales & more

May 24 - Tour Day
Local Oyster Competition
Live Shellfish Sales
Lund Harbour Walking Tours
Boat & Kayak Tours
Local Artists Meet & Greet
Shellfish Harvest Tours
Savary Island Clam Dig
Shellfish Farm Tour & more

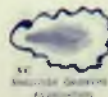


Visit www.LundBC.ca

for more festival information and week long specials

Community Partners

Lund
Community
Society



Active
Malaspina
Mariculture
Association

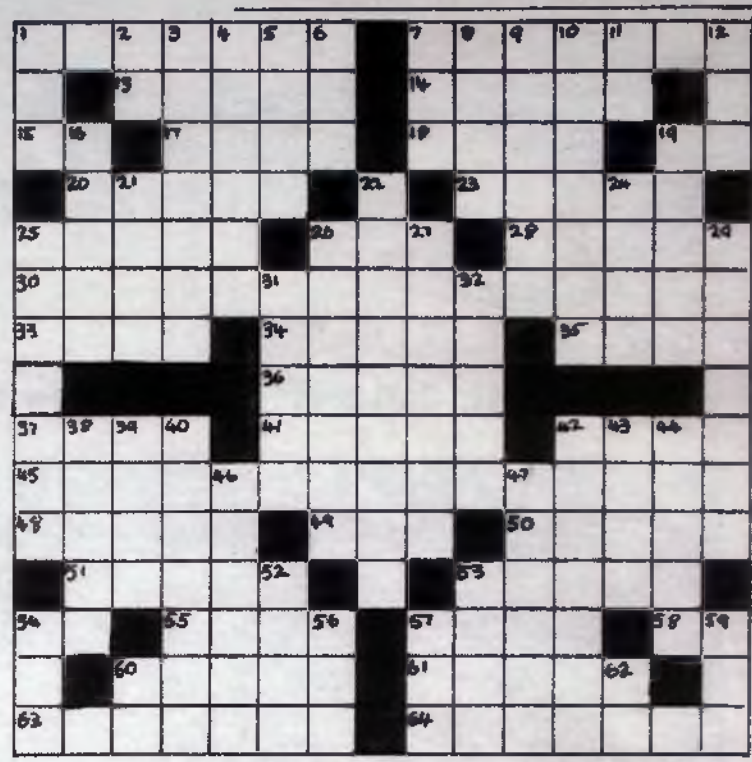
Powell River
Chamber of
Commerce

B.C. 101

CROSSWORD BY C. CRESSY

ACROSS:

- 1 TRAIN ROBBER BILL MINER
- 7 B.C. OFFICIAL TREE
- 13 CELTIC INHABITANTS
- 14 CATS CRY ?
- 15 FRENCH ARTICAL
- 17 HOMESTEAD
- 18 HIGH
- 19 TO EXIST
- 20 BRITISH PEER
- 23 FISH NET
- 25 TOWARD THE FOREARM
- 26 BY WAY OF
- 28 OLD WOMANISH
- 30 B.C.'S FIRST GOVERNOR
- 33 GRAPE DISEASE
- 34 _____ IS BORN (MOVIE)
- 35 SPANISH PAINTER
- 36 OPENING
- 37 DEADLY SNAKES
- 41 PR _____ (FOR U.S. ENEMY)
- 42 SUGAR SOURCE
- 45 MATTHEW BEGBIE WAS _
- 48 BOOHSAYER
- 49 CONSUME
- 50 ZODIAC SIGN
- 51 OBSCENE
- 53 HELPERS (ABBR.)
- 54 ALIEN
- 55 PRUDENT
- 57 FAT (COMB. FORM)
- 58 AS FAR AS
- 60 IRAQ CITY
- 61 BRUCE IS ONE
- 63 A CONNECTING PART
- 64 _____ NON GRATA (LAT.)



DOWN:

- 1 SOLIDIFY
- 2 FOR EXAMPLE
- 3. 2 ASIACHIEFS (2 WDS)
- 4 SOFT FELT HAT
- 5 PEARL BUCK HEROINE
- 6 M.C. MODEL
- 7 DEP. MINISTER AGRIC.
- 8 PAINTING MEDIUM
- 9 FRENCH CAKE
- 10 COURTINGS
- 11 OUCH
- 12 BUCK STOPS HERE
- 16 CHIEF OF THE JIN
- 19 AUSSIE TREE
- 21 RED CROSS (ABBR)
- 22 RECORDS THE PAST
- 25 EMPLOY FACTS (2 WDS)
- 26 TRAC E
- 27 HARD
- 29 LANDS
- 31 STONE MECHANIC
- 32 _____ UTAN (APE)
- 38 SWITCH
- 39 A FISH
- 40 B.C. LAKE NEAR ADAMS L.
- 42 COLLEGE TREASURERS
- 43 REVISE
- 44 VOID
- 46 SIGNIST
- 47 YELLOWHEAD PASS PARK
- 52 BELGIAN RIVER
- 53 MILITARY HELPER
- 54 AIRPORT GUESSWORK
- 56 WHEAT SPIKE
- 57 RUN ONCE AROUND
- 59 WWII AGENCY